



**India Meteorological Department
(Ministry of Earth Sciences)**

BULLETIN NO. 9 (ARB/01/2023)

TIME OF ISSUE: 1140 HOURS IST

DATED: 07.06.2023

FROM: INDIA METEOROLOGICAL DEPARTMENT (FAX NO. 24643965/24699216/24623220)

**TO: CONTROL ROOM, NDM, MINISTRY OF HOME AFFAIRS (FAX.NO. 23093750)
CONTROL ROOM NDMA (FAX.NO. 26701729)**

CABINET SECRETARIAT (FAX.NO.23012284, 23018638)

PS TO HON'BLE MINISTER FOR S & T AND EARTH SCIENCES (FAX NO.23316745)

SECRETARY, MOES (FAX NO. 24629777)

H.Q. (INTEGRATED DEFENCE STAFF AND CDS) (FAX NO. 23005137/23005147)

DIRECTOR GENERAL, DOORDARSHAN (23385843)

DIRECTOR GENERAL, AIR (23421105, 23421219)

PIB MOES (FAX NO. 23389042)

UNI (FAX NO. 23355841)

D.G. NATIONAL DISASTER RESPONSE FORCE (NDRF) (FAX NO. 26105912, 2436 3260)

DIRECTOR, PUNCTUALITY, INDIAN RAILWAYS (FAX NO. 23388503)

CHIEF SECRETARY, KERALA (FAX NO. 0471-2327176)

ADMINISTRATOR, LAKSHADWEEP ISLANDS (FAX NO. 0413-262184)

CHIEF SECRETARY, TAMILNADU (FAX NO. 044-25672304)

CHIEF SECRETARY, GOA (FAX NO. 0832-2415201)

CHIEF SECRETARY, KARNATAKA (FAX NO. 080-22258913)

CHIEF SECRETARY, MAHARASHTRA (FAX NO. 022- 22028594)

CHIEF SECRETARY, GUJARAT (FAX NO. 079-23250305)

CHIEF SECRETARY, DAMAN & DIU (FAX NO. 0260-2230775)

CHIEF SECRETARY, DADRA & NAGAR HAVELI (FAX NO. 0260-2645466)

Sub: Severe Cyclonic Storm “Biparjoy” (pronounced as “Biporjoy”) over eastcentral and adjoining southeast Arabian Sea

The severe cyclonic storm “**Biparjoy**” (pronounced as “**Biporjoy**”) over eastcentral and adjoining southeast Arabian Sea moved nearly north-northeastwards with a speed of 5 kmph during last 6 hours and lay centered at 0830 hours IST of 07th June, 2023 over the same region near latitude 12.7°N and longitude 66.2 °E, about 880 km west-southwest of Goa, 990 km southwest of Mumbai, 1060 km south-southwest of Porbandar and 1360 km south of Karachi.

It is very likely to intensify into a very severe cyclonic storm during next 12 hours. It would move nearly northwards during next 24 hours and then north-northwestwards during subsequent 3 days.

Forecast track and intensity are given below:

Date/Time(IST)	Position (Lat. °N/ long. °E)	Maximum sustained surface wind speed (Kmph)	Category of cyclonic disturbance
07.06.23/0830	12.7/66.2	105-115 gusting to 125	Severe Cyclonic Storm
07.06.23/1130	12.8/66.3	110-120 gusting to 135	Severe Cyclonic Storm
07.06.23/1730	13.0/66.4	120-130 gusting to 145	Very Severe Cyclonic Storm
07.06.23/2330	13.3/66.4	125-135 gusting to 150	Very Severe Cyclonic Storm
08.06.23/0530	13.6/66.4	130-140 gusting to 155	Very Severe Cyclonic Storm
08.06.23/1730	14.3/66.2	135-145 gusting to 160	Very Severe Cyclonic Storm
09.06.23/0530	15.0/65.9	135-145 gusting to 160	Very Severe Cyclonic Storm
09.06.23/1730	15.7/65.6	145-155 gusting to 170	Very Severe Cyclonic Storm
10.06.23/0530	16.5/65.2	145-155 gusting to 170	Very Severe Cyclonic Storm
10.06.23/1730	17.4/64.8	145-155 gusting to 170	Very Severe Cyclonic Storm
11.06.23/0530	18.3/64.4	135-145 gusting to 160	Very Severe Cyclonic Storm
11.06.23/1730	19.2/64.0	130-140 gusting to 155	Very Severe Cyclonic Storm
12.06.23/0530	19.8/63.7	125-135 gusting to 150	Very Severe Cyclonic Storm

(i) Wind warning:

7th June: Gale wind speed reaching 105-115 kmph gusting to 125 kmph is prevailing over eastcentral Arabian Sea and adjoining areas of westcentral & southeast Arabian Sea. It is likely to increase and become 125-135 kmph gusting to 155 kmph during night of 7th June over the same area.

Squally weather with wind speed reaching 35-45 kmph gusting to 55 kmph is likely over adjoining areas of south Arabian Sea and along & off north Kerala-Karnataka-Goa coasts.

8th June: Gale wind speed reaching 130-140 kmph gusting to 155 kmph is likely to prevail over eastcentral Arabian Sea and adjoining areas of westcentral & south Arabian and it is likely to increase and become 135-145 kmph gusting to 160 kmph during night of 8th June over the same area.

Squally weather with wind speed reaching 35-45 kmph gusting to 55 kmph is likely along & off Karnataka-Goa-Maharashtra coasts.

9th June: Gale wind speed reaching 135-145 kmph gusting to 160 kmph is likely to prevail over central Arabian Sea and it is likely to increase and become 145-155 kmph gusting to 170 kmph from evening of 9th June over the same area.

Squally wind speed reaching 40-50 kmph gusting to 60 kmph is likely over adjoining areas of South Arabian Sea. Squally weather with wind speed reaching 35-45 kmph gusting to 55 kmph is likely along & off Karnataka-Goa-Maharashtra coasts.

10th June: Gale wind speed reaching 145-155 kmph gusting to 170 kmph is likely to prevail over central Arabian Sea.

Squally wind speed reaching 40-50 kmph gusting to 60 kmph is likely over adjoining areas of South Arabian Sea. Squally weather with wind speed reaching 35-45 kmph gusting to 55 kmph is likely along & off Karnataka-Goa-Maharashtra coasts.

11th June: Gale wind speed reaching 135-145 kmph gusting to 160 kmph is likely to prevail over central & adjoining north Arabian Sea.

Squally weather with wind speed reaching 35-45 kmph gusting to 55 kmph is likely along & off Maharashtra-Gujarat coasts.

12th June: Gale wind speed reaching 125-135 kmph gusting to 150 kmph is likely to prevail over central & adjoining north Arabian Sea.

Squally weather with wind speed reaching 35-45 kmph gusting to 55 kmph is likely along & off Maharashtra-Gujarat coasts.

(iii) Sea condition

7th June: Very high Sea condition is likely to prevail over eastcentral Arabian Sea and adjoining westcentral & southeast Arabian. Sea condition is likely to be rough to very rough over south Arabian Sea and along & off north Kerala-Karnataka-Goa coasts.

8th June:

Sea condition is likely to be very high to phenomenal over central Arabian Sea and adjoining south Arabian Sea and it is likely to become phenomenal from evening of 8th June over the same region.

Sea condition is likely to be rough over Arabian Sea along & off Karnataka-Goa-Maharashtra coasts.

9th June: Sea condition is likely to be phenomenal over central Arabian Sea. Sea condition is likely to be rough over adjoining areas of Arabian Sea and along & off Karnataka-Goa-Maharashtra coasts.

10th June: Sea condition is likely to be phenomenal over central Arabian Sea. Sea condition is likely to be rough over adjoining areas of north Arabian Sea and along & off Karnataka-Goa-Maharashtra coasts.

11th June: Sea condition is likely to be phenomenal to very high over central & adjoining north Arabian Sea. Sea condition is likely to be rough to very rough over adjoining areas of northeast Arabian Sea and along & off Maharashtra-Gujarat coasts.

12th June: Sea condition is likely to be phenomenal to very high over central & adjoining north Arabian Sea. Sea condition is likely to be rough over adjoining areas of northeast Arabian Sea and along & off Maharashtra-Gujarat coasts.

(iv) Fishermen Warning (Graphics Attached)

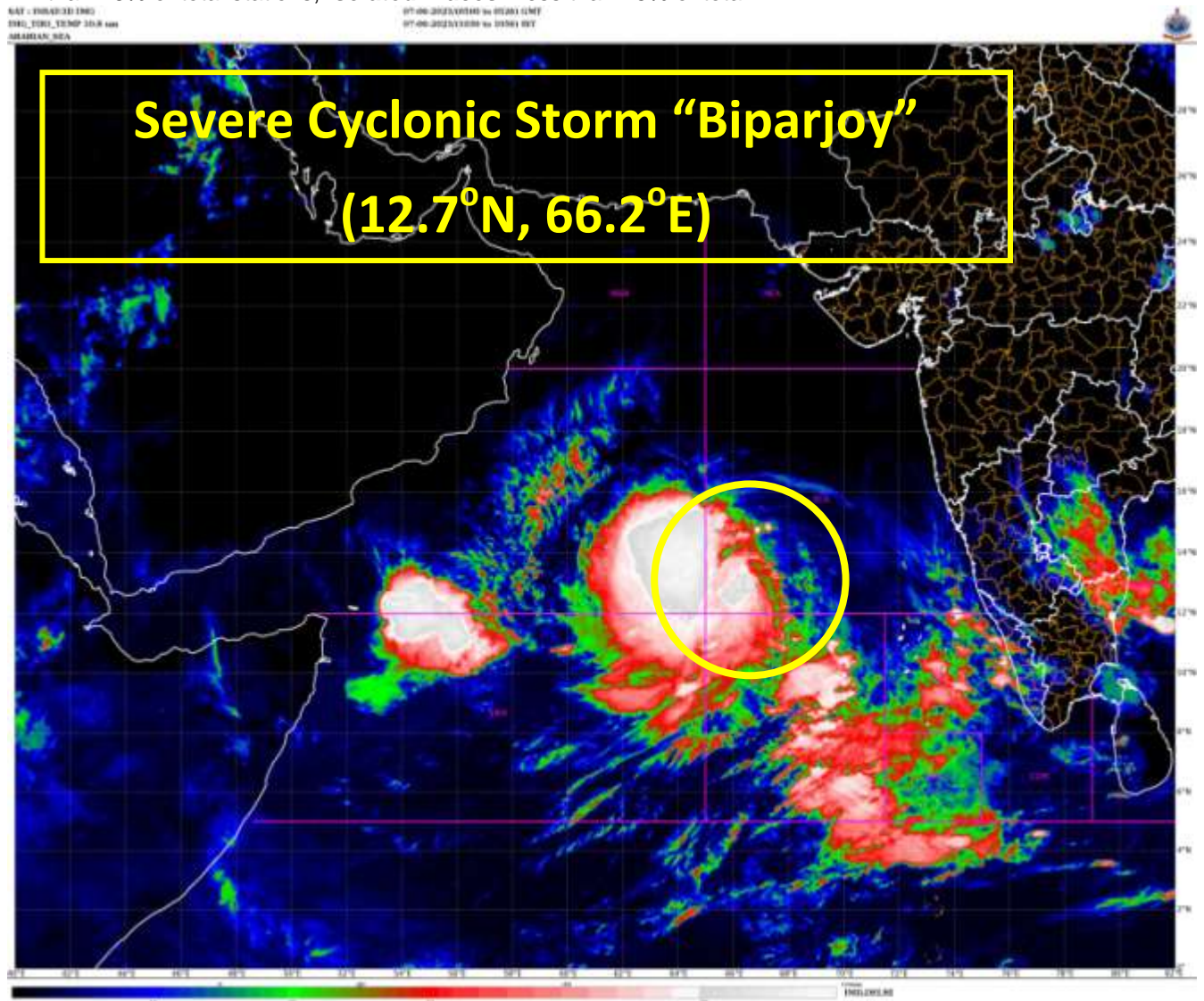
- Total suspension of fishing operations over
 - eastcentral and adjoining westcentral & south Arabian Sea till 12th June.
 - westcentral and adjoining northwest Arabian Sea during 12-14th June
- Fishermen are advised not to venture into:
 - Central Arabian Sea till 13th June.
 - Adjoining areas of north Arabian Sea during 12th -13th June.
 - Adjoining areas of south Arabian Sea till 7th June.
- Those out at sea are advised to return to coast.

The system is under continuous surveillance and the next message will be issued at 1430 hours IST of today, the 7th June, 2023.

(Ananda Kumar Das)
Scientist F, Cyclone Warning Division, New Delhi

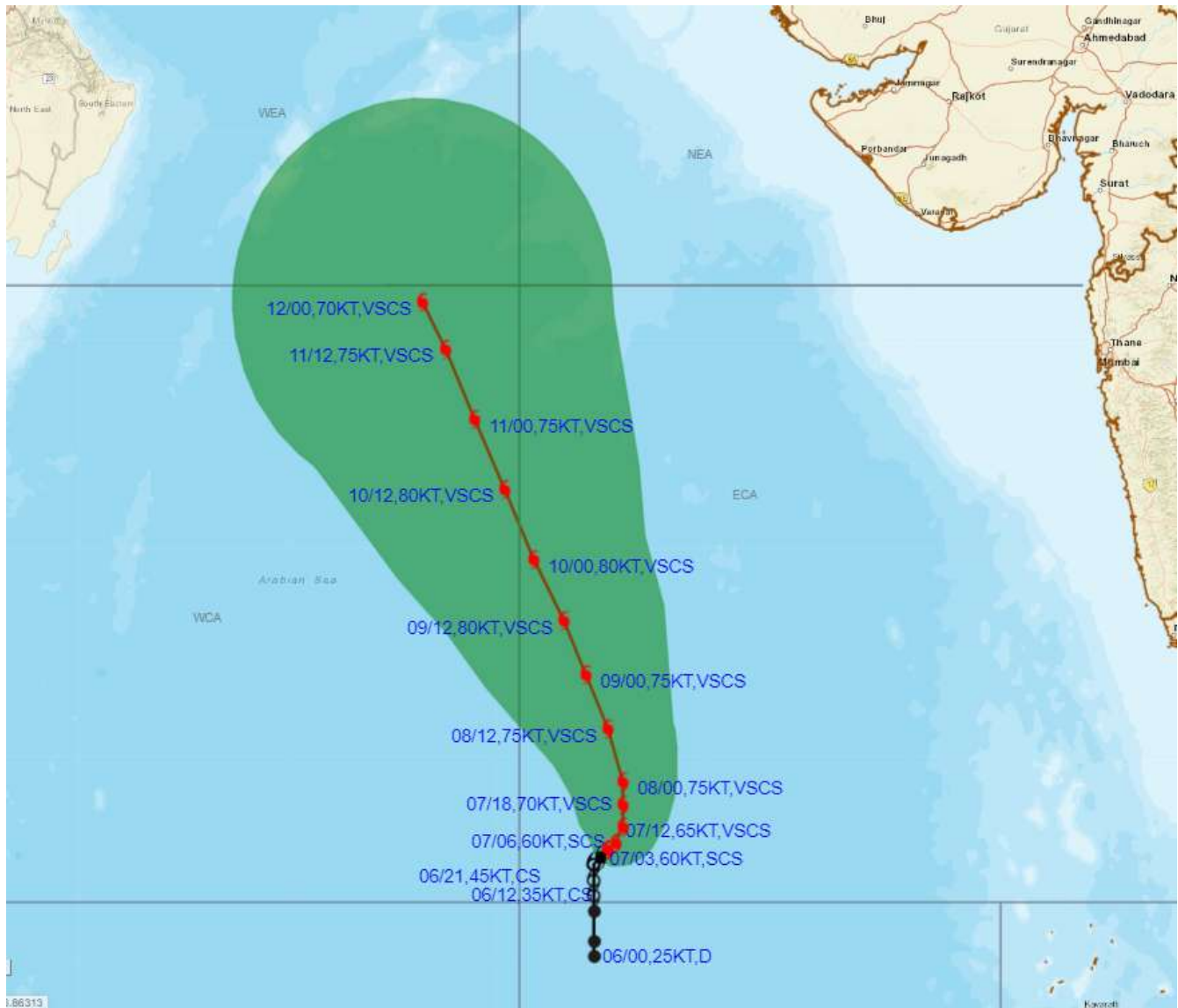
Copy to: ACWC Kolkata/ ACWC Chennai/ CWC Bhubaneswar/CWCVisakhapatnam/CWC Ahmedabad/ MO Port Blair/MC Raipur/MC Bhopal/MC Hyderabad/RMC Nagpur

LEGEND: Heavy Rainfall: 64.5 to 115.5mm, **Very Heavy Rainfall:** 115.6 to 204.4mm **Most Places:** more than 76% of total stations, **Isolated Places:** Less than 25% of total





OBSERVED AND FORECAST TRACK ALONGWITH CONE OF UNCERTAINTY OF SEVERE CYCLONIC STORM "BIPARJOY" OVER EASTCENTRAL AND ADJOINING SOUTHEAST ARABIAN SEA BASED ON 0300 UTC (0830 IST) OF 07TH JUNE 2023.



DATE/TIME IN UTC

IST=UTC + 0530

L: LOW PRESSURE AREA

WML: WELL MARKED LOW PRESSURE AREA

D: DEPRESSION (17-27 KT)

DD: DEEP DEPRESSION (28-33 KT)

CS: CYCLONIC STORM (34-47 KT)

SCS: SEVERE CYCLONIC STORM (48-63KT)

VSCS: VERY SEVERE CYCLONIC STORM (64-89 KT)

ESCS: EXTREMELY SEVERE CYCLONIC STORM (90-119 KT)

SuCS: SUPER CYCLONIC STORM (≥ 120 KT)

LESS THAN 34 KT

34-47 KT

≥ 48 KT

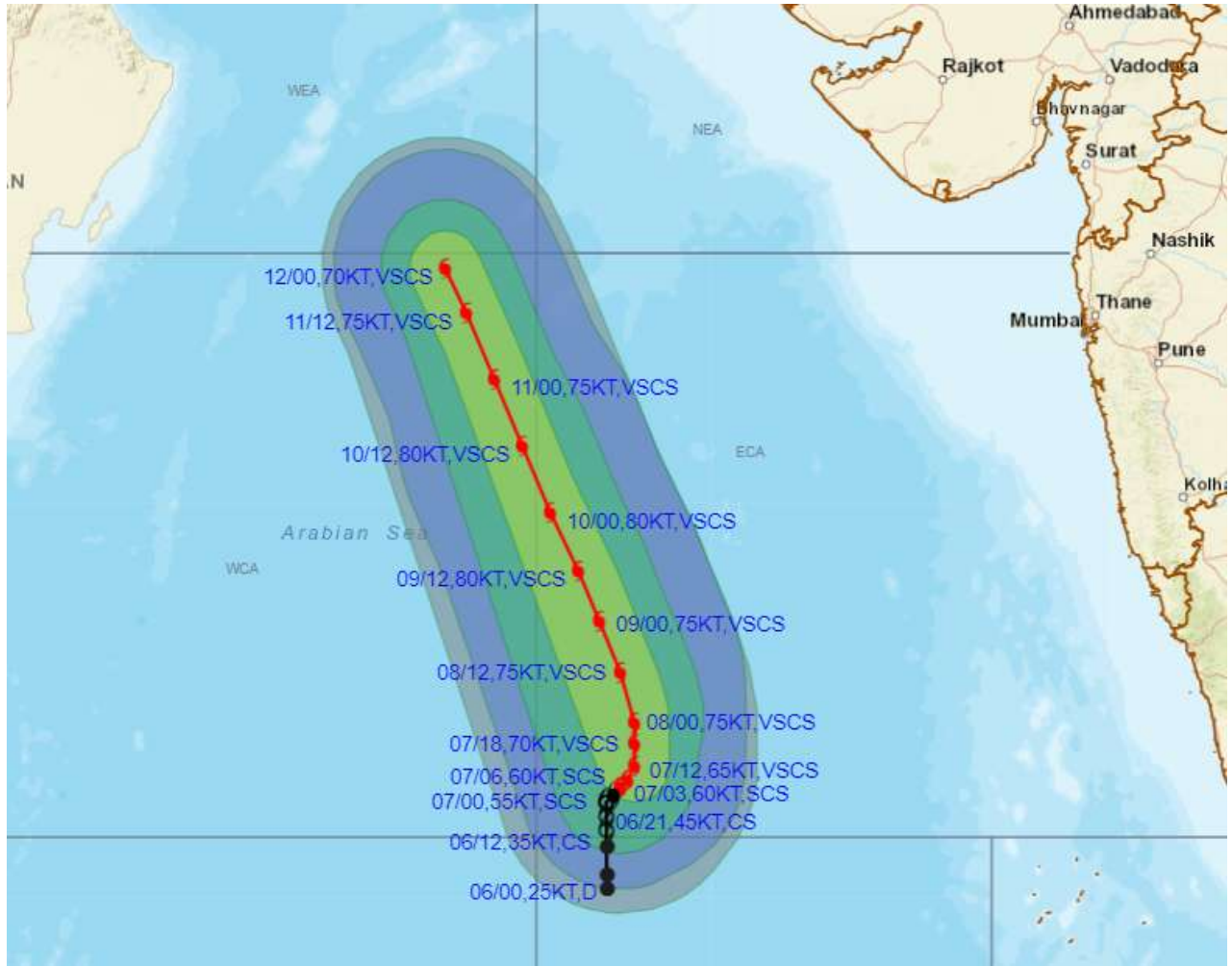
OBSERVED TRACK

FORECAST TRACK

CONE OF UNCERTAINTY



OBSERVED AND FORECAST TRACK ALONGWITH QUADRANT WIND DISTRIBUTION OF SEVERE CYCLONIC STORM "BIPARJOY" OVER EASTCENTRAL AND ADJOINING SOUTHEAST ARABIAN SEA BASED ON 0300 UTC (0830 IST) OF 07TH JUNE 2023.



DATE/TIME IN UTC

IST=UTC + 0530

L: LOW PRESSURE AREA

WML: WELL MARKED LOW PRESSURE AREA

D: DEPRESSION (17-27 KT)

DD: DEEP DEPRESSION (28-33 KT)

CS: CYCLONIC STORM (34.47 KT)

SCS: SEVERE CYCLONIC STORM (48-63KT)

VSCS: VERY SEVERE CYCLONIC STORM (64-89 KT)

ESCS: EXTREMELY SEVERE CYCLONIC STORM (90-119 KT)

SuCS: SUPER CYCLONIC STORM (\geq 120 KT)

● LESS THAN 34 KT

○ 34.47 KT

● \geq 48 KT

— OBSERVED TRACK

— FORECAST TRACK

▲ CONE OF UNCERTAINTY

AREA OF MAXIMUM SUSTAINED WIND SPEED:

■ 28-33 KT (52-61 KMPH)

■ 34.49 KT (62-91 KMPH)

■ 50-63 KT (92-117 KMPH)

■ \geq 64 KT (\geq 118 KMPH)

IMPACT OVER THE SEA

MSW (knot/kmph)	Impact	Action
28-33 (52-61)	Very rough seas	Total suspension of fishing operations
34-49 (62-91)	High to very high seas	Total suspension of fishing operations
50-63 (92-117)	Very high seas	Total suspension of fishing operations
\geq 64 (\geq 118)	Phenomenal	Total suspension of fishing operations

Fishermen warning graphics

